

BRAVO

FESTIVAL
South VMC

TYPE	STARTING FROM
STUDIO	\$450,990 - \$480,990
ONE BEDROOM	\$565,990 - \$620,990
ONE BEDROOM + DEN, ONE BATH	\$650,990 - \$675,990
ONE BEDROOM + DEN, TWO BATH	\$665,990 - \$750,990
TWO BEDROOM	\$750,990 - \$820,990
TWO BEDROOM + DEN	\$865,990 - \$885,990

DEPOSIT STRUCTURE
<p>\$12,000 on Signing Balance of 5% in 30 days 5% in 300 days 2.5% in 600 days 2.5% in 750 days 5% on Occupancy Deposit Payable to: <u>Dentons Canada LLP In Trust</u></p>

PARKING

(Available for purchase with 2 bedroom and larger suites only)

Earlybird Price ~~\$70,000~~ \$68,000

LOCKER

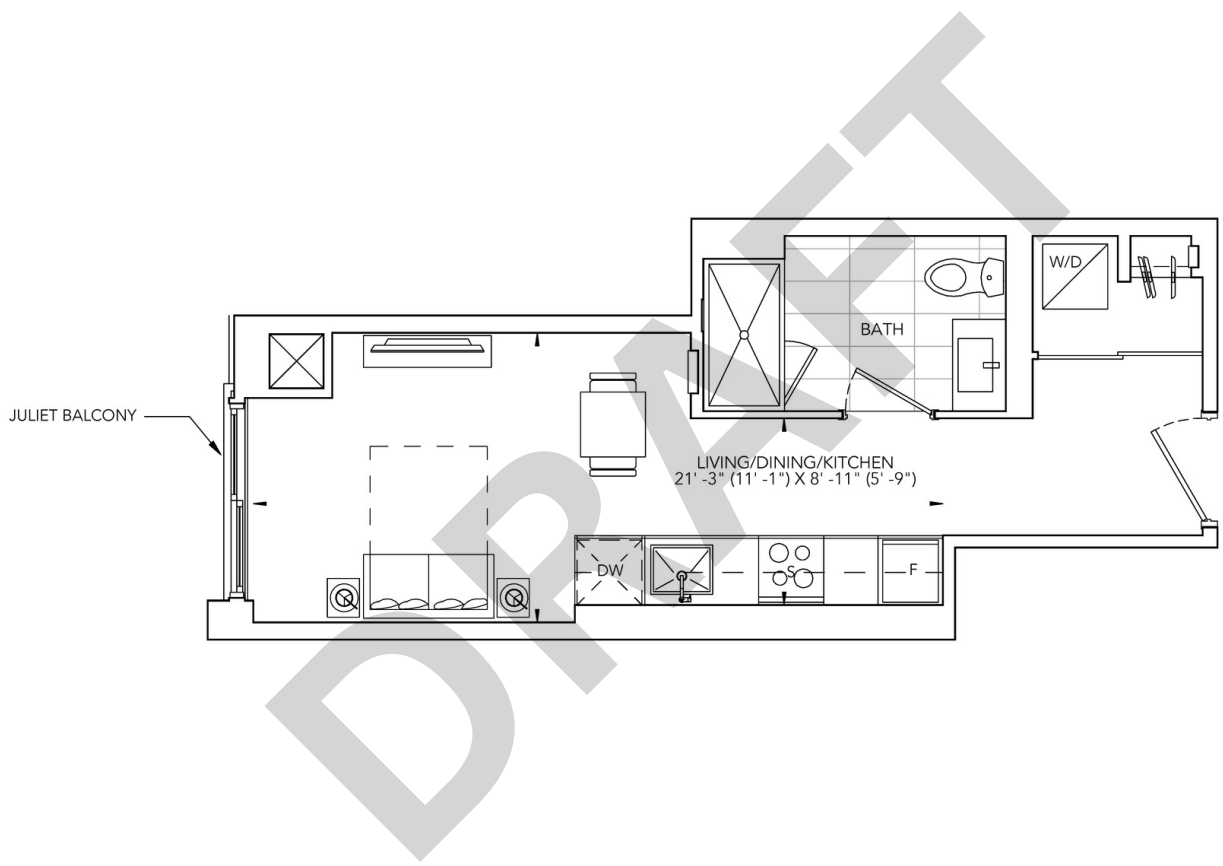
\$5,000

TENTATIVE OCCUPANCY DATE

Q1 2028



STUDIO
INTERIOR: 334 SQ.FT. | EXTERIOR: 0 SQ.FT
EXPOSURE: WEST

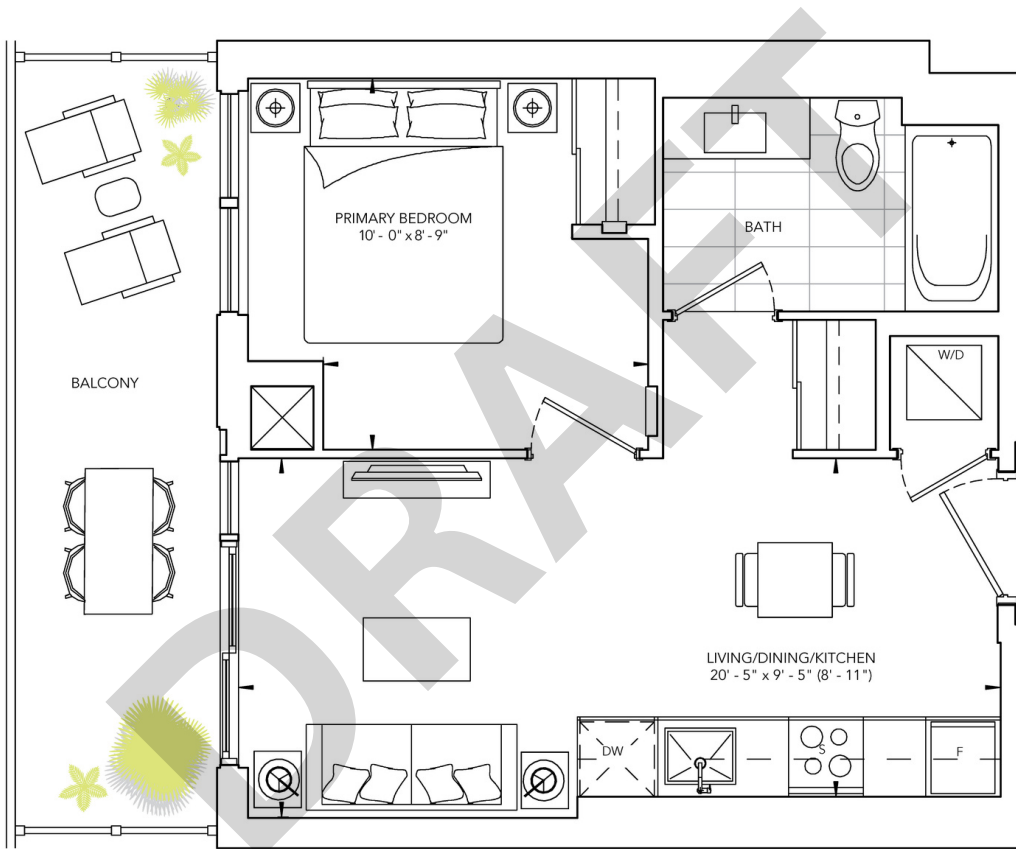


All prices, figures and materials are preliminary and are subject to change without notice E. &O. E. Note: For more information on the method used for calculating the floor area of any unit, reference should be made to Home Construction Regulatory Authority ("HCRA") Directive. May 2023

ONE BEDROOM

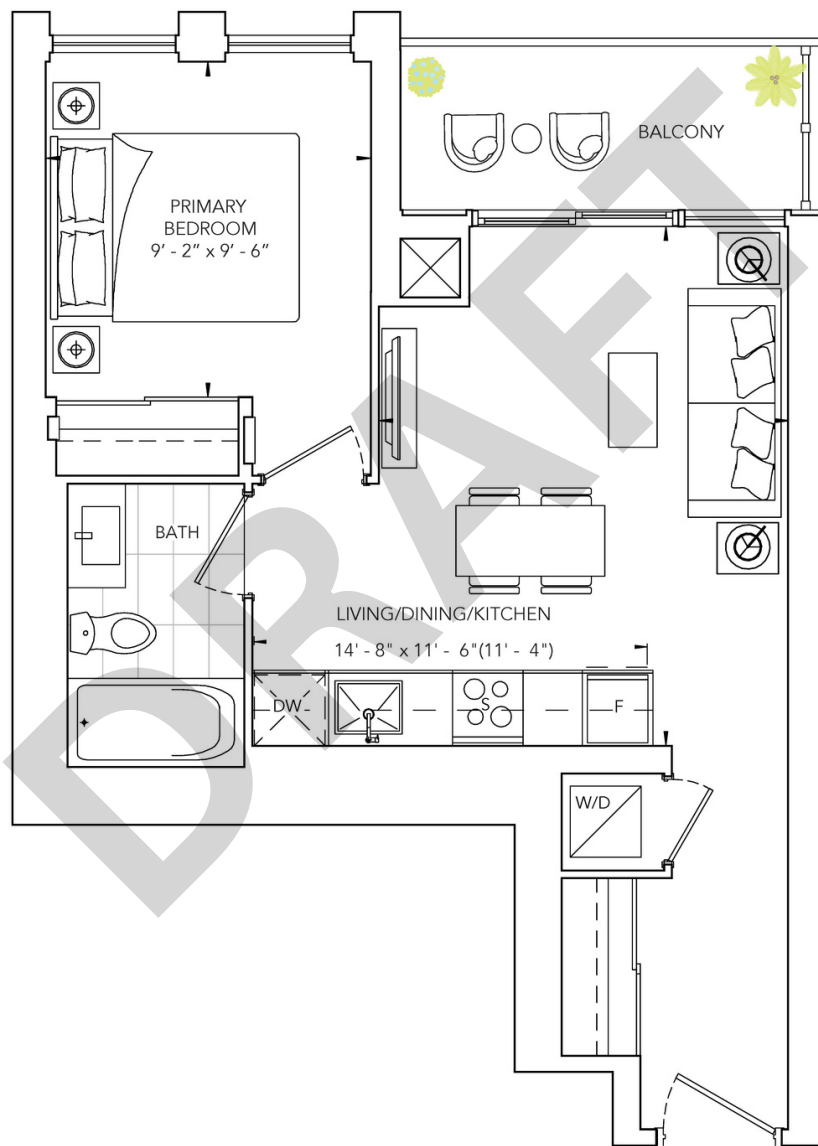
INTERIOR: 439 SQ.FT. | EXTERIOR: 102 SQ.FT

EXPOSURE: NORTH



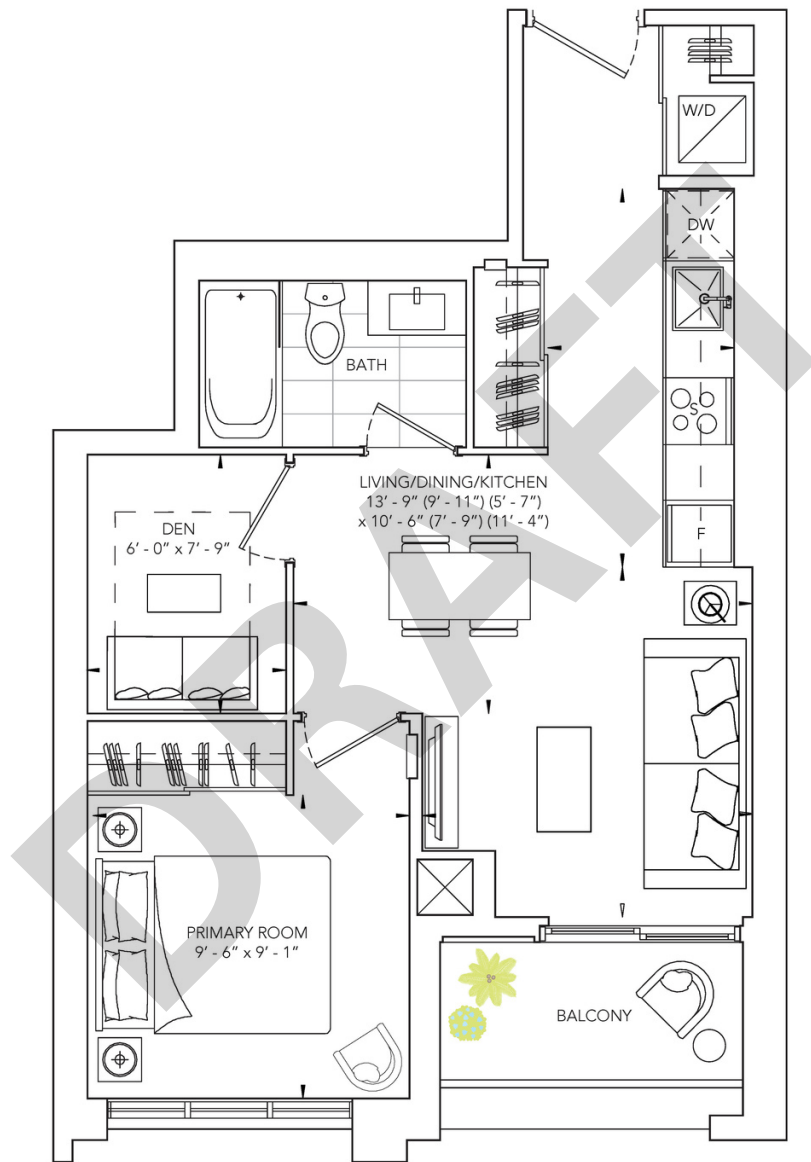
All prices, figures and materials are preliminary and are subject to change without notice E. &O. E. Note: For more information on the method used for calculating the floor area of any unit, reference should be made to Home Construction Regulatory Authority ("HCRA") Directive. May 2023

ONE BEDROOM
INTERIOR: 503 SQ.FT. | EXTERIOR: 45 SQ.FT
EXPOSURE: EAST



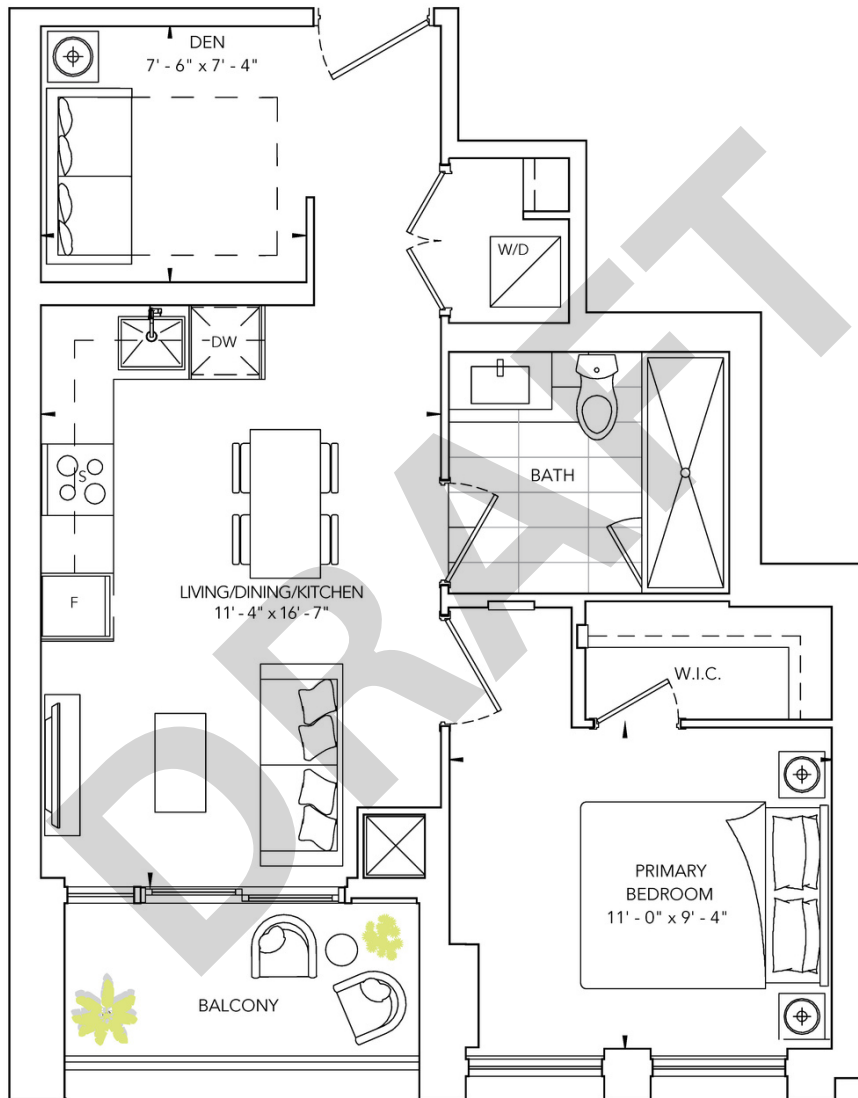
All prices, figures and materials are preliminary and are subject to change without notice E. &O. E. Note: For more information on the method used for calculating the floor area of any unit, reference should be made to Home Construction Regulatory Authority ("HCRA") Directive. May 2023

ONE BEDROOM + DEN, ONE BATH
INTERIOR: 540 SQ.FT. | EXTERIOR: 49 SQ.FT
EXPOSURE: SOUTH



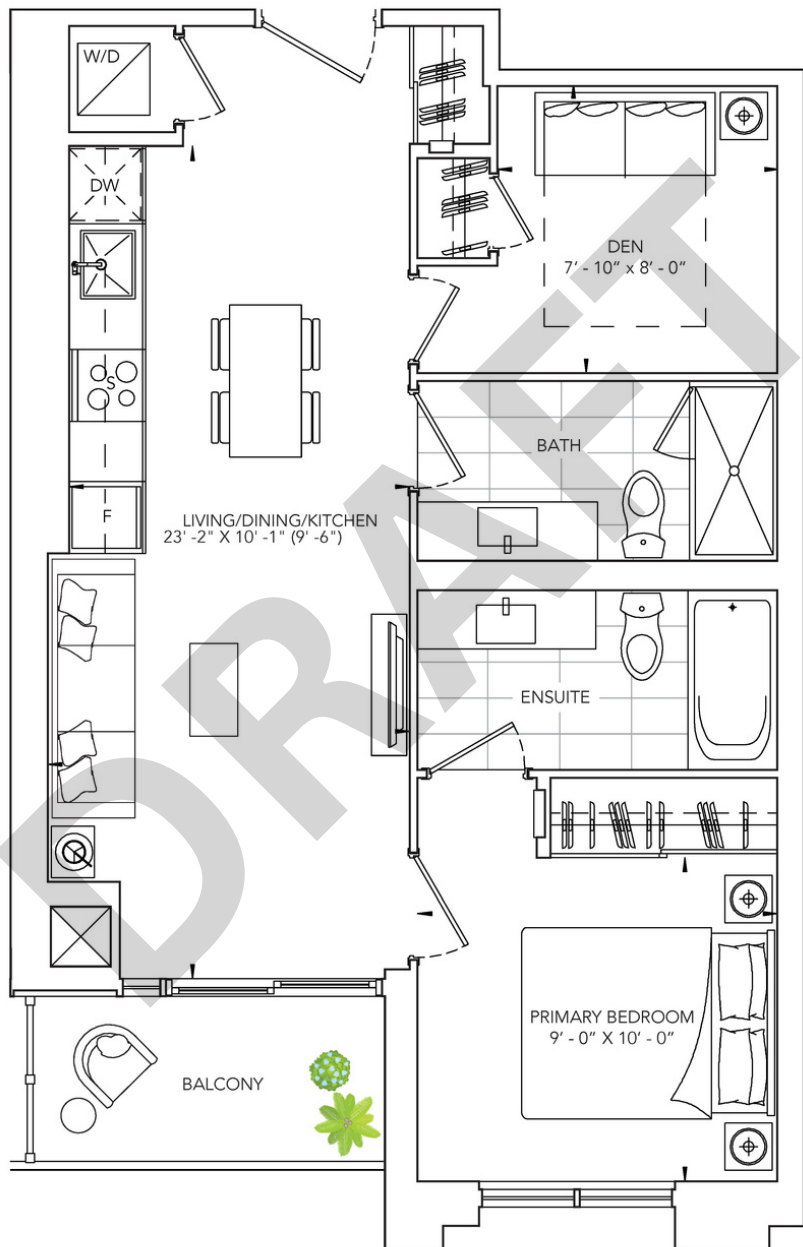
All prices, figures and materials are preliminary and are subject to change without notice E. & O. E. Note: For more information on the method used for calculating the floor area of any unit, reference should be made to Home Construction Regulatory Authority ("HCRA") Directive. May 2023

ONE BEDROOM + DEN, ONE BATH
INTERIOR: 561 SQ.FT. | EXTERIOR: 40 SQ.FT
EXPOSURE: WEST



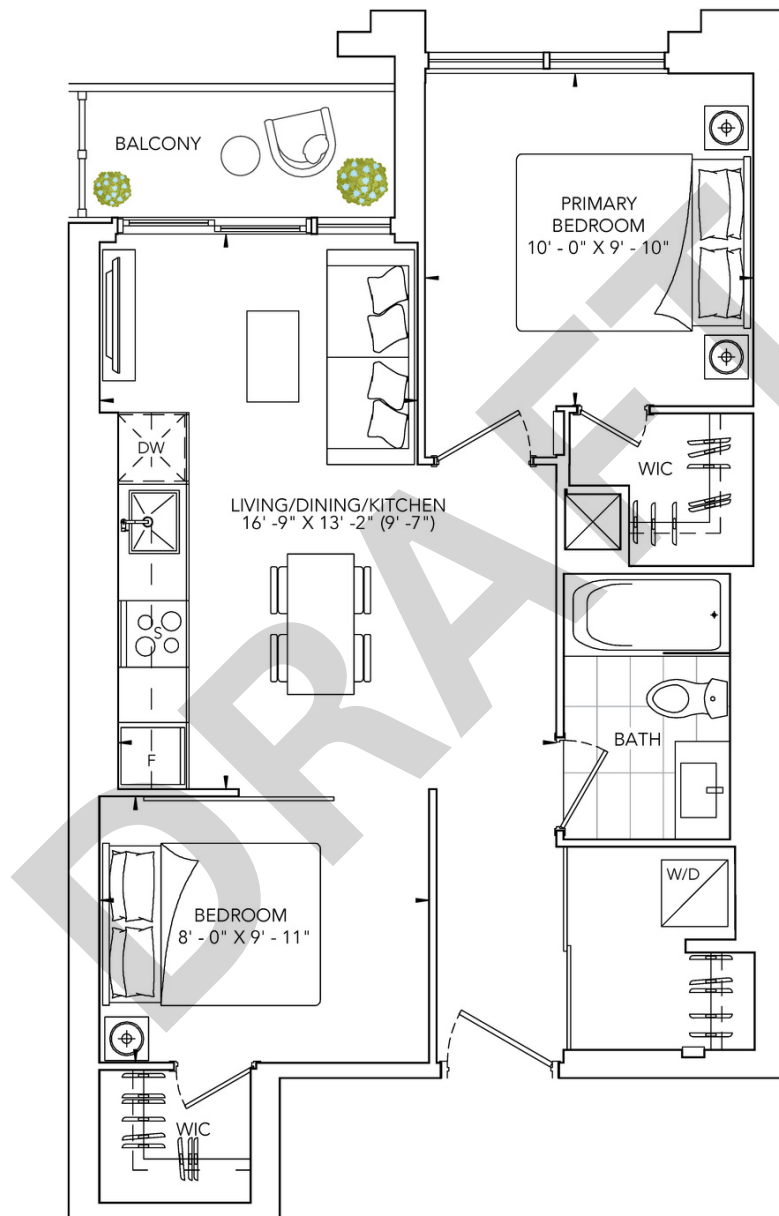
All prices, figures and materials are preliminary and are subject to change without notice E. & O. E. Note: For more information on the method used for calculating the floor area of any unit, reference should be made to Home Construction Regulatory Authority ("HCRA") Directive. May 2023

ONE BEDROOM + DEN, TWO BATH
INTERIOR: 647 SQ.FT. | EXTERIOR: 48 SQ.FT
EXPOSURE: SOUTH



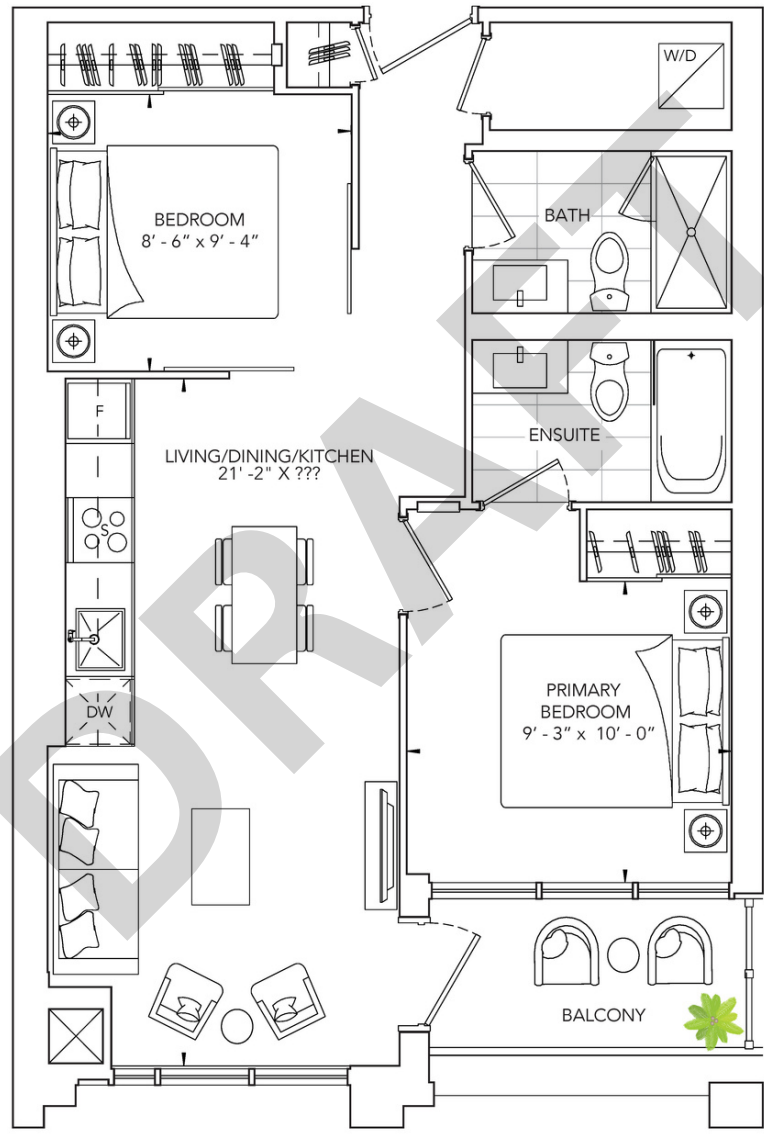
All prices, figures and materials are preliminary and are subject to change without notice E. & O. E. Note: For more information on the method used for calculating the floor area of any unit, reference should be made to Home Construction Regulatory Authority ("HCRA") Directive. May 2023

TWO BEDROOM, ONE BATH
INTERIOR: 620 SQ.FT. | EXTERIOR: 35 SQ.FT
EXPOSURE: NORTH



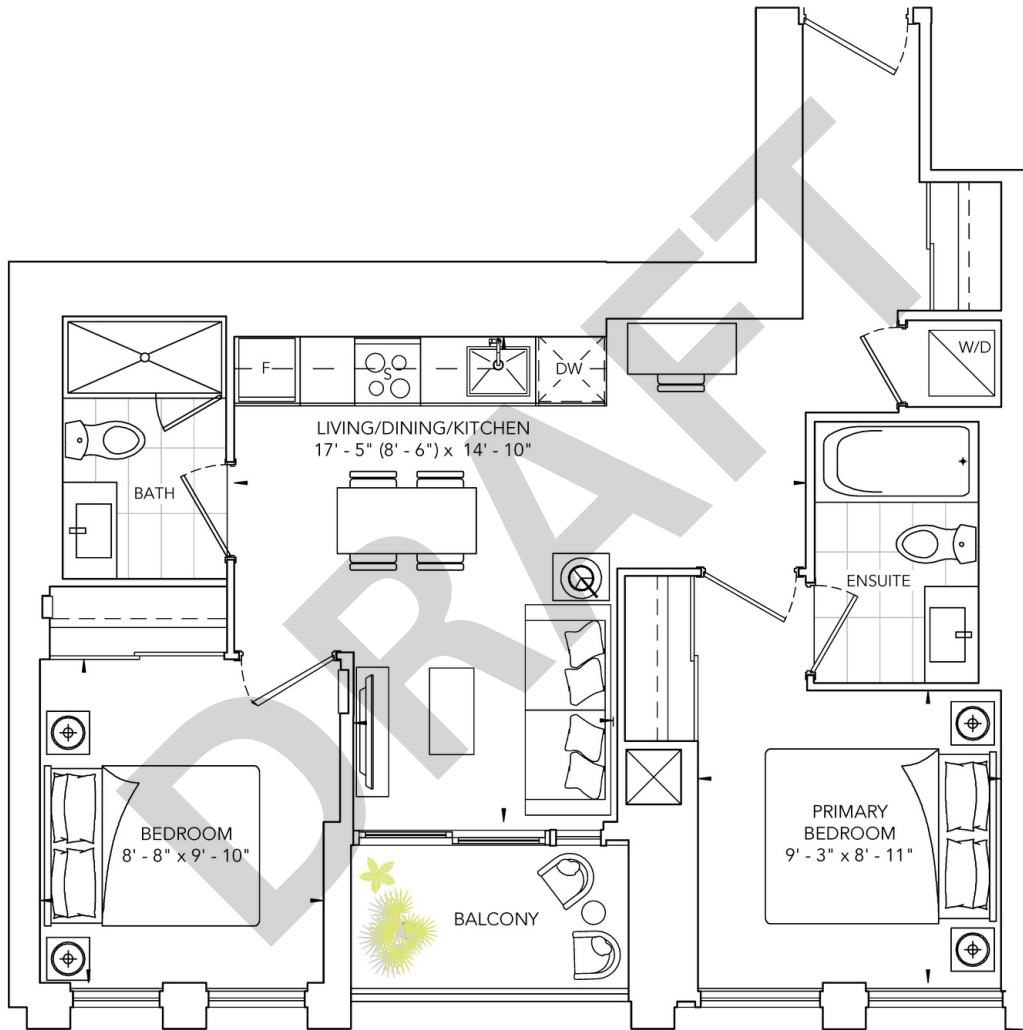
All prices, figures and materials are preliminary and are subject to change without notice E. & O. E. Note: For more information on the method used for calculating the floor area of any unit, reference should be made to Home Construction Regulatory Authority ("HCRA") Directive. May 2023

TWO BEDROOM, TWO BATH
INTERIOR: 684 SQ.FT. | EXTERIOR: 58 SQ.FT
EXPOSURE: SOUTH



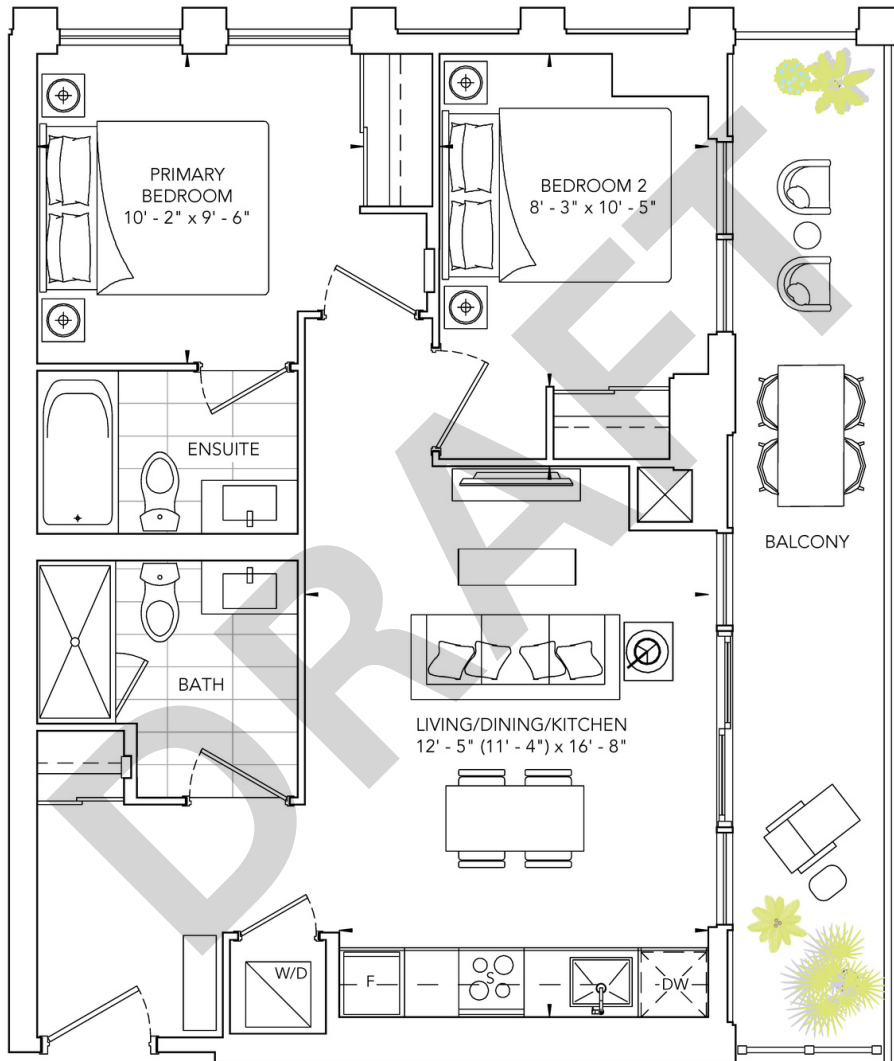
All prices, figures and materials are preliminary and are subject to change without notice E. &O. E. Note: For more information on the method used for calculating the floor area of any unit, reference should be made to Home Construction Regulatory Authority ("HCRA") Directive. May 2023

TWO BEDROOM, TWO BATH
INTERIOR: 698 SQ.FT. | EXTERIOR: 34 SQ.FT
EXPOSURE: WEST



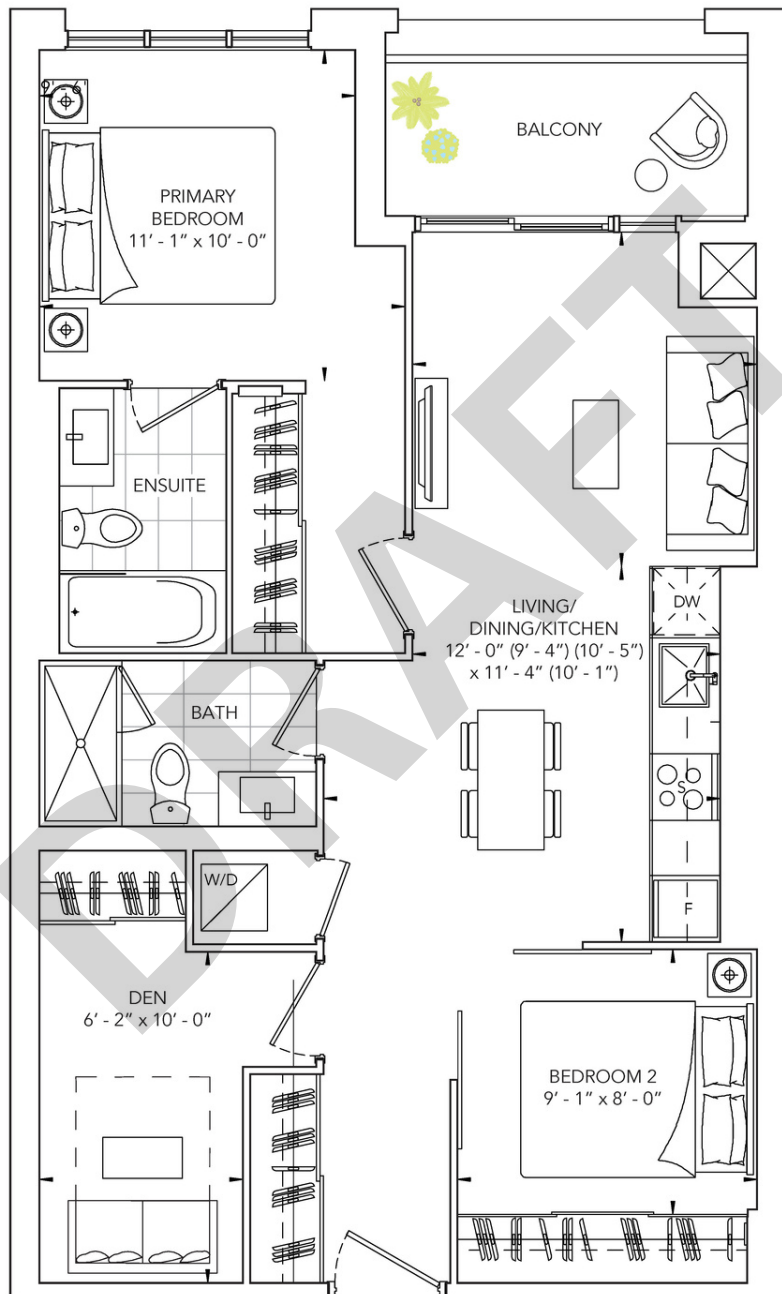
All prices, figures and materials are preliminary and are subject to change without notice E. &O. E. Note: For more information on the method used for calculating the floor area of any unit, reference should be made to Home Construction Regulatory Authority ("HCRA") Directive. May 2023

TWO BEDROOM, TWO BATH
INTERIOR: 697 SQ.FT. | EXTERIOR: 126 SQ.FT
EXPOSURE: SOUTH EAST



All prices, figures and materials are preliminary and are subject to change without notice E. &O. E. Note: For more information on the method used for calculating the floor area of any unit, reference should be made to Home Construction Regulatory Authority ("HCRA") Directive. May 2023

TWO BEDROOM + DEN, TWO BATH
INTERIOR: 817 SQ.FT. | EXTERIOR: 63 SQ.FT
EXPOSURE: NORTH



All prices, figures and materials are preliminary and are subject to change without notice E. & O. E. Note: For more information on the method used for calculating the floor area of any unit, reference should be made to Home Construction Regulatory Authority ("HCRA") Directive. May 2023